

Griffserien RA und AE

Werkstoff und Oberfläche:
Rundaluminium AlMgSi 0,5;
gleitgeschliffen und pulver-
beschichtet in RAL 9002 grau-
weiß oder mit antibakterieller
Beschichtung in RAL 9003.

Tragkraft:
min. 500 N.

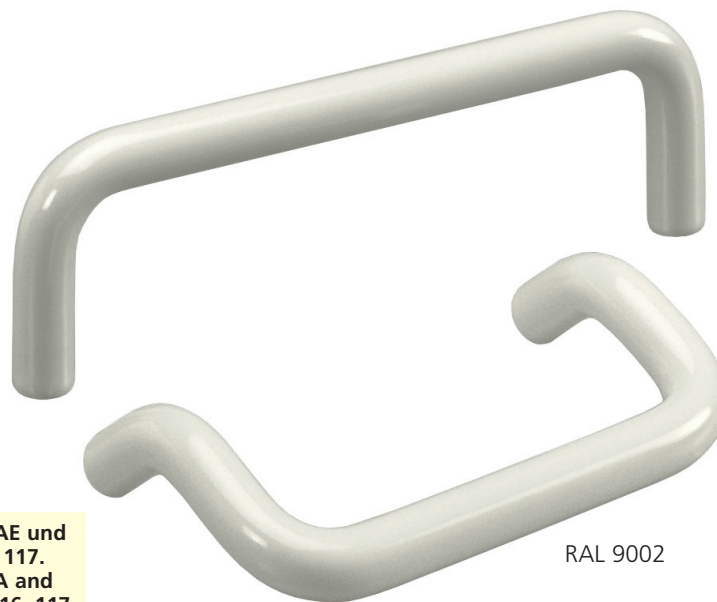
Hinweis:
Andere Abmessungen auf
Anfrage.

Handle Series RA and AE

Material and surface:
Profiled aluminium AlMgSi 0.5;
vibratory ground and powder
coated in RAL 9002 grey white
or with antibacterial coating in
RAL 9003.

Stress resistance:
min. 500 N.

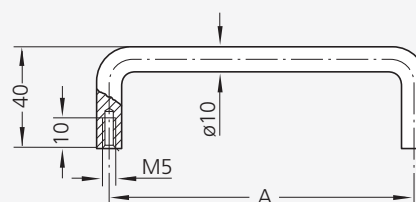
Note:
Other dimensions on request.



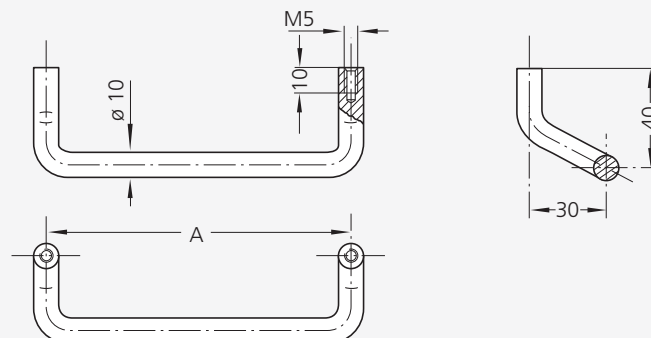
RAL 9002

**Typenreihen AE und
RA Seite 116, 117.
Type series RA and
AE on page 116, 117.**

Typ RA



Typ AE



Clean Line

Antibakteriell Antibacterial



Typ	A	RAL 9002	RAL 9003
		Bestell-Nr. / Order no.	Bestell-Nr. / Order no.
RA	55	RA-10.055.9002	RA-10.055.9003A
	88	RA-10.088.9002	-
	100	RA-10.100.9002	RA-10.100.9003A
	120	RA-10.120.9002	-
	180	RA-10.180.9002	RA-10.180.9003A
	200	RA-10.200.9002	-
	235	RA-10.235.9002	-
	250	RA-10.250.9002	-
AE	86	AE-10.086.9002	AE-10.086.9003A
	120	AE-10.120.9002	AE-10.120.9003A
	180	AE-10.180.9002	AE-10.180.9003A